



Laffa

kebab store

OUR SANDWICHES ARE ALL SERVED IN THE DELICIOUS LAFFA BREAD (LEAF BREAD). THEY ARE MADE TO ORDER AND PRESENTED IN TWO SIZES LAFFA (LARGE) AND LAFFINHA (SMALL).

(KEBABS)

LAMB'S SHAWARMA 10,50 | 14,90

Having so many different names and so many fans throughout the World, this is our favorite sandwich. In the Laffa moistened with humus, the lamb's shawarma slices are put together with lettuce leaves, fresh tomatoes, onion with Kruv® salad and crispy fries, all sprinkled with tahine sauce. It's simply delicious!

TURKEY'S SHAWARMA 10,50 | 14,90

This is the most popular shawarma in Israel. A lighter version of the traditional Shawarma. The turkey's meat is seasoned with selected spices imported directly from the Middle East and then sliced, wrapped with crispy lettuce leaves and arranged on top of a layer of humus. Also served with tomato, seasoned onion, Kruv® salad, fries and tahine sauce. A distinctive flavor.

FALAFEL 8,50 | 11,90

Israel's traditional kebab. Falafel is a fully cooked chickpea and spices ball are soft on the inside and crunchy on the outside. Combined with humus, tahine sauce, a bit of tabouleh, lettuce, onion with sumac, Kruv® salad and fries, this sandwich is a must taste!

SABICH 8,50 | 10,90

Iraq's typical sandwich. A surprising mixture of humus, fried egg-plant with boiled eggs, Kruv® salad and a special touch of Arabian tabouleh with tahine sauce. You will love it!

KAFTA 9,00 | 12,50

Laffa's exclusive recipe has an incomparable flavor. Wrapped in laffa with humus, lettuce leaves, tomato, Kruv® salad, fries and tahine, those meat balls are irresistible!

TENDERLOIN MICHUI 10,50 | 14,90

A combination of our softest meat with Arabian side dishes. Delicious slices of tenderloin with humus, Kruv® salad, onion with sumac, lettuce leaves with fresh tomatoes and fries, all covered with tahine sauce.

CHICKEN MICHUI 9,00 | 12,50

Grilled chicken strips wrapped with lettuce, fresh tomatoes, Kruv® salad and fries along with a delicious garlic sauce. A traditional sandwich that satisfies all tastes.

VEGETARIANS

* KRUV SALAD: A traditional salad of Middle East cabbage with special condiments.

(SWEET TREATS)

ONLY IN LAFFINHA SIZE (SMALL SIZE)

STRUDELAFFA 6,50

Our version of the traditional "Apple Strudel" wrapped with laffinha. Slices of roasted apple with raisin and cinnamon, all coated with honey and pieces of cashew nuts. Yummy! Also available in the diet version (sugarless).

BANANA WITH OVOMALTINE® 6,50

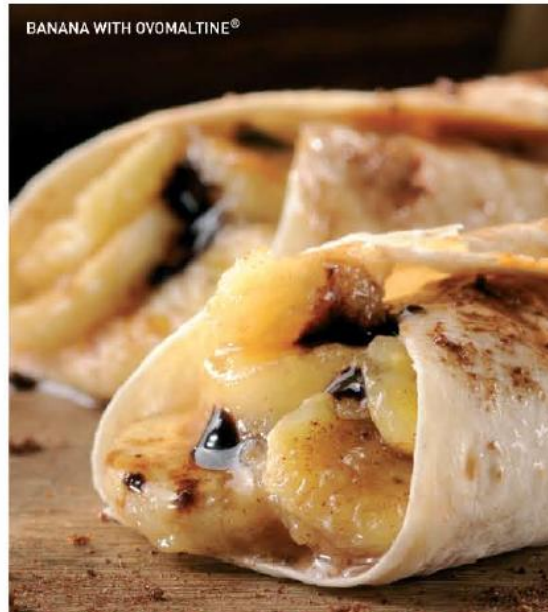
A soft touch of milk candy, slices of cooked bananas with sugar and cinnamon covered with a thin layer of chocolate syrup and Ovomaltine®. It's mouthwatering!

STRAWBERRY WITH NUTELLA® (SEASONAL) 6,50

Definitively, they were born for one another. It is impossible to resist hot laffinha filled with Nutella® and pieces of sweet strawberry sprinkled with cashew nuts.

BIS 6,50

Mouthwatering mixture of caramel, wafel with chocolate and chocolate sauce.



BANANA WITH OVOMALTINE®



(PORTIONS)

HUMUS	15,00
FALAFEL	15,00
KAFTA	17,00
FRIES	8,00

(BEBIDAS)

SOFT DRINK (CAN)	3,00
JUICE (CAN)	3,50
BEER (MANY TRADEMARKS)	4,50
'MATE' (ICED TEA) (COPÓ)	2,60
H2OH!	3,50
MINERAL WATER	2,50

DON'T DRINK AND DRIVE.